



# Spi-C Polyclonal Antibody

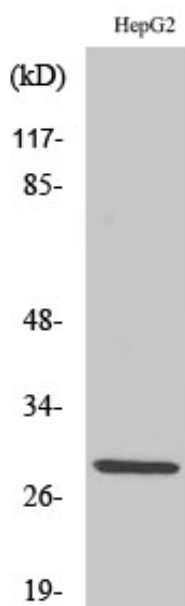
<b>Catalog No</b>	YP-Ab-02036
<b>Isotype</b>	IgG
<b>Reactivity</b>	Human;Rat;Mouse;
<b>Applications</b>	WB;ELISA;IHC
<b>Gene Name</b>	SPIC
<b>Protein Name</b>	Transcription factor Spi-C
<b>Immunogen</b>	The antiserum was produced against synthesized peptide derived from human SPIC. AA range:131-180
<b>Specificity</b>	Spi-C Polyclonal Antibody detects endogenous levels of Spi-C protein.
<b>Formulation</b>	Liquid in PBS containing 50% glycerol, 0.5% BSA and 0.02% sodium azide.
<b>Source</b>	Polyclonal, Rabbit,IgG
<b>Purification</b>	The antibody was affinity-purified from rabbit antiserum by affinity-chromatography using epitope-specific immunogen.
<b>Dilution</b>	WB 1:500-2000;IHC-p 1:50-300; ELISA 2000-20000
<b>Concentration</b>	1 mg/ml
<b>Purity</b>	≥90%
<b>Storage Stability</b>	-20°C/1 year
<b>Synonyms</b>	SPIC; Transcription factor Spi-C
<b>Observed Band</b>	29kD
<b>Cell Pathway</b>	Nucleus .
<b>Tissue Specificity</b>	Preferentially detected in fetal and adult spleen, lymph nodes and at lower levels in bone marrow and fetal liver.
<b>Function</b>	function:Probable transcription factor that binds to the PU-box, a purine-rich DNA sequence (5'-GAGGA[AT]-3') that can act as a lymphoid-specific enhancer.,similarity:Belongs to the ETS family.,similarity:Contains 1 ETS DNA-binding domain.,subunit:Binds DNA as a monomer.,tissue specificity:Preferentially detected in fetal and adult spleen, lymph nodes and at lower levels in bone marrow and fetal liver.,
<b>Background</b>	The protein encoded by this gene regulates the development of red pulp macrophages, which are necessary for iron homeostasis and the recycling of red blood cells. [provided by RefSeq, Aug 2016],
<b>matters needing attention</b>	Avoid repeated freezing and thawing!



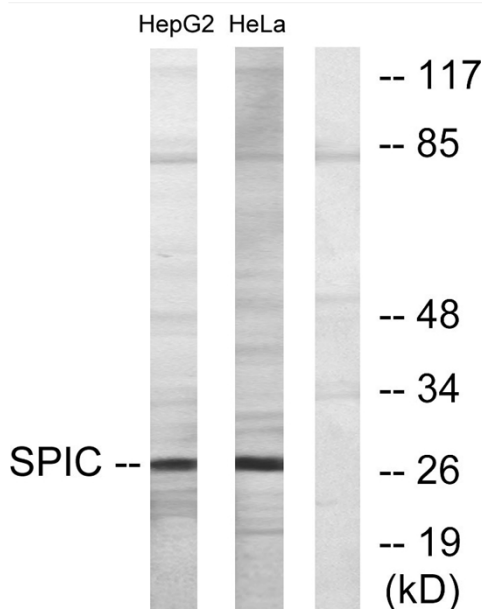
## Usage suggestions

This product can be used in immunological reaction related experiments. For more information, please consult technical personnel.

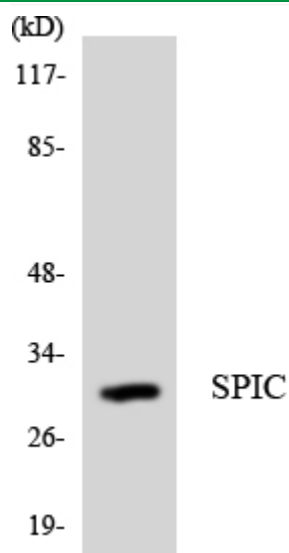
## Products Images



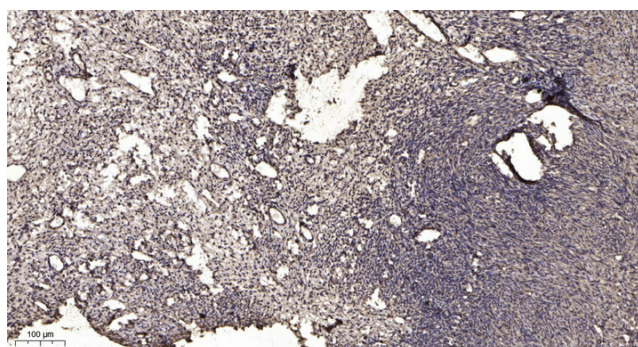
Western Blot analysis of various cells using Spi-C Polyclonal Antibody cells nucleus extracted by Minute TM Cytoplasmic and Nuclear Fractionation kit (SC-003, Inventbiotech, MN, USA).



Western blot analysis of lysates from HepG2 and HeLa cells, using SPIC Antibody. The lane on the right is blocked with the synthesized peptide.



Western blot analysis of the lysates from Jurkat cells using SPIC antibody.



Immunohistochemical analysis of paraffin-embedded human oophoroma. 1, Antibody was diluted at 1:200(4° overnight). 2, Tris-EDTA, pH9.0 was used for antigen retrieval. 3, Secondary antibody was diluted at 1:200(room temperature, 45min).